

OPTIMA SHIPBROKERS LTD

Sale & Purchase / Demolition / Dry Cargo Chartering
Tanker Chartering / Newbuildings / Repairs / Offshore / Projects

Monday 27th December, 2012

Volume 440 Week 51

Sale & Purchase Activity Week 51

SECOND HAND SALES

DRY TONNAGE

Type	Sub Type	Name	DWT	Built	Yard	Country Built	M/E	Features	Price US\$m	Buyers	Comment
BC	SD	VOGEBULKER	169,168	1999	HALLA HI	KOREA, S	B&W	Gless	14	GREEK	
BC	SD	FRONT GUIDER	169,142	1991	DAEWOO SB	KOREA, S	B&W	Gless	9.1	UNDISCLOSED	
BC	SD	JIANGSU NEW YANGZIJIAN*	82,400	2013	JIANGSU NEW YANGZIJIAN	CHINA	MAN-B&W	Gless	abt 23 each	CLIENTS OF NIS-SHIN	
BC	SD	JIANGSU NEW YANGZIJIAN*	82,400	2012	JIANGSU NEW YANGZIJIAN	CHINA	MAN-B&W	Gless			
BC	SD	JIANGSU NEW YANGZIJIAN*	82,000	2012	JIANGSU NEW YANGZIJIAN	CHINA	MAN-B&W	Gless			
BC	SD	JIANGSU NEW YANGZIJIAN*	82,000	2012	JIANGSU NEW YANGZIJIAN	CHINA	MAN-B&W	Gless			
BC	SD	JIANGSU NEW YANGZIJIAN*	82,000	2014	JIANGSU NEW YANGZIJIAN	CHINA	MAN-B&W	Gless			
BC	SD	GUANGZHOU LONGXUE L0026*	82,000	2012	GUANGZHOU LONGXUE	CHINA	MAN-B&W	Gless	22.5 each	UNDISCLOSED	
BC	SD	GUANGZHOU LONGXUE L0027*	82,000	2012	GUANGZHOU LONGXUE	CHINA	MAN-B&W	Gless			
BC	SD	PEGASUS ISLAND	77,830	2002	mitsui	JAPAN	MAN-B&W	Gless	12.2	UNDISCLOSED	
BC	SD	IKAN BAYAN	75,777	2005	SANOYAS	JAPAN	B&W	Gless	15.5	GREEK	
BC	SD	MASS ENTERPRISE	69,555	1993	TSUNEISHI SB	JAPAN	B&W	Gless	5.3	CHINESE	
BC	SD	YANGZHOU DAYANG DY4021*	63,500	2013	YANGZHOU DAYANG SB	CHINA	MAN-B&W	CR 4 X 35MT	24.5 Each	EUROPEAN	
BC	SD	YANGZHOU DAYANG DY4022*	63,500	2012	YANGZHOU DAYANG SB	CHINA	MAN-B&W	CR 4 X 35MT			
BC	SD	SELANDIA	48,139	1996	GDANSKA STOCZNIA	POLAND	Sulzer	CR 4 X 35MT	6.5	UNDISCLOSED	
BC	SD	YOU XUAN	43,697	1990	TSUNEISHI SB	JAPAN	B&W	CR 4 X 30MT	4.5	UNDISCLOSED	
BC	SD	MARILLION	41,796	1986	HYUNDAI HI	KOREA, S	B&W	CR 4 X 25MT	3.15	UNDISCLOSED	
BC	SD	KEN JYO	23,583	1996	SAIKI HI	JAPAN	B&W	CR 4 X 30MT	4.8	UNDISCLOSED	

*En bloc

Week's 50 sales



:: Member of BIMCO and the Baltic Exchange ::



DRY TONNAGE

Type	Sub Type	Name	DWT	Built	Yard	Country Built	M/E	Features	Price US\$m	Buyers	Comment
CONT		MAERSK JENAZ	39,228	2006	HYUNDAI MIPO	KOREA, S	MAN-B&W	2824 TEUs	13.5	UNDISCLOSED	
CONT		HANSA COMMODORE	21,470	1997	HANJIN HI	KOREA, S	B&W	CR 2 X 40MT, CR 1 X 10MT, 1645 TEUs	4.5	UNDISCLOSED	
CONT		NORTHERN HARMONY	20,252	1994	DAEWOO SB	KOREA, S	B&W	CR 2 X 40MT, CR 1 X 8MT, 1709 TEUs		UNDISCLOSED	
CONT		LAURITA RICKMERS	14,086	1998	SZCZECINSKA STOCZNIA	POLAND	B&W	CR 3 X 40MT, 1162 TEUs	3.8	UNDISCLOSED	
CONT		GREEN VALLEY	12,571	1995	SZCZECINSKA STOCZNIA	POLAND	B&W	CR 2 X 40MT, 1016 TEUs		UNDISCLOSED	

GC	SD	WESTERN STEAMER*	9,500	2011	ZHEJIANG ZHENYU SB	CHINA	MaK	CR 2 X 60MT	rgrn 40	NORWEGIAN	
GC	SD	WESTERN ISLAND*	9,366	2010	ZHEJIANG ZHENYU SB	CHINA	MaK	CR 2 X 60MT			
GC	SD	WESTERN CRUISER*	9,307	2011	ZHEJIANG ZHENYU SB	CHINA	MaK	CR 2 X 60MT			
GC	SD	WESTERN CARRIER*	9,302	2010	ZHEJIANG ZHENYU SB	CHINA	MaK	CR 2 X 35MT			
GC	SD	MCL TUNIS	6,006	1996	ALEXANDRIA SY	EGYPT	MaK	CR 2 X 65MT	1.8	UNDISCLOSED	
GC	SD	JIA LONG	5,025	2011	WENLING KAILI	CHINA	Chinese Std. Type	Gless	6.5	KOREAN	

PASS	Ro-Ro/Ferry	PRINCESS VICTORIA	890	1980	SANTANDER	SPAIN	Deutz			UNDISCLOSED	
------	-------------	-------------------	-----	------	-----------	-------	-------	--	--	-------------	--

*En bloc

Week's 50 sales

WET TONNAGE

Type	Sub Type	Name	DWT	Built	Yard	Country Built	M/E	Hull	Price US\$m	Buyers	Comment
TANK	Crude Oil	BW UTAH	299,498	2001	DAEWOO SB	KOREA, S	B&W	DH	29.1	UNDISCLOSED	
TANK	Crude Oil	MAYFAIR	298,405	1995	DAEWOO HI	KOREA, S	Sulzer	DH		CLIENTS OF ROSNEFT	
TANK	Oil Products	CHAMPION PRIDE	99,997	1998	SAMSUNG HI	KOREA, S	MAN-B&W	DH	11	GREEK	
TANK	Chemical/Oil Products	SPRUCE 3	38,396	2007	GUANGZHOU SY	CHINA	MAN-B&W	DH		UNDISCLOSED	vsl was controlled by the bank
TANK	Chemical/Oil Products - IMO III	SPRUCE 1	38,396	2007	GUANGZHOU SY	CHINA	MAN-B&W	DH		UNDISCLOSED	Vsl was controlled by the bank
TANK	Chemical/Oil Products - IMO II/III	SONGA WINDS	19,954	2009	FUKUOKA SB	JAPAN	Mitsubishi	DH	23	UNDISCLOSED	
TANK	Chemical/Oil Products - IMO II/III	EASTERN HONESTY	8,719	2002	SHIN KU-RUSHIMA	JAPAN	B&W	DH	8.4	KOREAN	
TANK	Chemical/Oil Products - IMO II/III	GOLDEN YASAKA	8,672	1998	USUKI SY	JAPAN	Mitsubishi	DH	6.2	UNDISCLOSED	
TANK	Chemical/Oil Products - IMO II	NST AMALIA	6,863	2007	NANJING SHENGHUA	CHINA	MaK	DH	0	UNDISCLOSED	AT AUCTION
TANK	Chemical/Oil Products IMO III	JEMBAWATI	6,685	1999		JAPAN	B&W	DH	4.5	TAIWANESE	
TANK	Chemical/Oil Products IMO II	LADY OZGE	6,100	2011	SAHIN CELIK	TURKEY	Hyundai Himssen	DH	14	TURKISH	
TANK	Chemical/Oil Products IMO II	NATASJA	4,318	2005	GISAN	TURKEY	MaK	DH		UNDISCLOSED	AT AUCTION
TANK	LPG	SYN ALCOR	9,329	2003	PESARO CANTIERE NAVALE	ITALY	MaK		23	NORWEGIAN	

*En bloc

Week's 50 sales

DEMOLITION

Type	Sub Type	Name	DWT	Built	Yard	Country Built	M/E	LDT	Scrap Price (US\$/t)	Price US\$m	Buyers	Comment
BC	SD	JIN HAN	75,524	1984	VEROLME	BRAZIL	MAN	13,350	360	4.8	CHINA	
BC	SD	HUA JIN XI	64,976	1982	TSUNEISHI SB	JAPAN	B&W	12,192			UNDISCLOSED	
BC	SD	OCEAN KOREA	64,575	1984	DAEWOO SB	KOREA, S	Sulzer		382		CHINA	
BC	SD	OSTSEE MERCHANT	63,865	1985	B&W SKIBSVAERFT	DENMARK	B&W	12,520	410	5.1	PAKISTAN	
BC	SD	SANTO SUCCESS	63,261	1984	mitsubishi	JAPAN	MAN	10,587			UNDISCLOSED	
BC	SD	OCEAN NOBLE	37,963	1985	KAWASAKI HI	JAPAN	B&W	6,966	376	2.6	CHINA	INCL ABT 200T BUNKERS ROB
BC	SD	BELDE	37,732	1985	HITACHI ZOSEN	JAPAN	B&W	7,500	410	3	INDIA	
BC	SD	NASSAU PRIDE	35,177	1985	NKK	JAPAN	Sulzer				UNDISCLOSED	
BC	Open Hatch	ALTANGER	30,382	1986	KURUSHIMA	JAPAN	Sulzer		400		INDIA	
BC	SD	FRIENDSHIP V	29,135	1984	IMABARI SB	JAPAN	Sulzer	6,865	396	2.7	BANGLADESH	
BC	SD	HONG KONG SUN	25,425	1984	IMABARI SB	JAPAN	Sulzer	6,203	390	2.4	BANGLADESH	
BC	SD	CHEREMKHOVO	23,242	1984	MATHIAS	GERMANY	MAN				UNDISCLOSED	
BC	SD	TEGUCIGALPA	11,849	1975	JULIANA GI-JONESA	SPAIN	Werkspoor		365		INDIA	

CONT		HANJIN OSAKA	62,681	1992	HANJIN HI	KOREA, S	Sulzer		447		INDIA	
CONT		BOSPORUS BRIDGE	47,359	1993	SHIN KURUSHIMA	JAPAN	B&W				UNDISCLOSED	
CONT		CONTI SHANGHAI	44,510	1996	HDW AG	GERMANY	Mitsubishi				UNDISCLOSED	
CONT		HANSA INDIA	43,369	1994	SAMSUNG HI	KOREA, S	Sulzer				UNDISCLOSED	AS IS COLOMBO
CONT		JARU BHUM	12,654	1982	IMABARI SB	JAPAN	Mitsubishi				UNDISCLOSED	

*En bloc

Week's 50 sale



DEMOLITION

Type	Sub Type	Name	DWT	Built	Yard	Country Built	M/E	LDT	Scrap Price (US\$/t)	Price US\$m	Buyers	Comment
GC	TD	AHMED ARAB	22,351	1983	mitsubishi	JAPAN	Sulzer	9,052			UNDISCLOSED	
GC	TD	GOLDEN BRIDGE	15,709	1981	ULJANIK BRODOGRADILIST	YUGOSLAVIA	B&W	6,284	412	2.6	INDIA	
GC	TD	GOLDEN LIGHT	15,100	1980	AUSTIN	UK	Sulzer	3,906	322	1.25	VIETNAMESE	
GC	SD	SAGITTA	6,208	1982	OKA NAVASHINO	U.S.S.R.	Dvigatel Revolyut-sii				UNDISCLOSED	

OFF-SHORE	AHTS	ASSO DI CIOTTO	1,229	1982	SGORBINI ANTONINI	ITALY	General Motors		413		INDIA	
-----------	------	----------------	-------	------	-------------------	-------	----------------	--	-----	--	-------	--

PASS	Ro-Ro/Ferry	QUEEN OF SAANICH	1,593	1963	VICTORIA MACHINERY	CANADA	MaK				UNDISCLOSED	
PASS	Ro-Ro/Ferry	QUEEN OF VANCOUVER	1,260	1962	BURRARD	CANADA	MaK				UNDISCLOSED	
PASS	Ro-Ro/Rail	CALYPSO	1,156	1970	SVENDBORG SKIBSVAERFT	DENMARK	Frichs				UNDISCLOSED	
PASS	Ro-Ro/Pass	NONA MARY	861	1972	HAVRE ATELIERS & CHANT	FRANCE	MAN				UNDISCLOSED	

RO-RO	Vehicles Carrier	PEARL RAY	14,837	1980	SUMITOMO HI	JAPAN	Sulzer				UNDISCLOSED	
RO-RO	Ro-Ro/Pass	RODANTHI	1,930	1974	NAIKAI SB	JAPAN	Pielstick	6,500			UNDISCLOSED	

REEF		AL MAREEKH	12,271	1984	mitsubishi	JAPAN	Sulzer				UNDISCLOSED	
REEF		FRIO ADRIATIC*	10,021	1986	MATHIAS	GERMANY	MAN		350		CHINA	
REEF		INVINCIBLE*	9,360	1985	MATHIAS	GERMANY	MAN		350			
REEF		PUSAN REEFER	8,239	1984	HAYASHIKANE SB	JAPAN	B&W				INDIA	

TANK	Chemical/Oil Products - DH	BOW LEOPARD	40,257	1988	KOREA SB	KOREA, S	B&W		435		INDIA	INCL ABT 70T STST
TANK	Crude/Oil Products - DH	CAPAHUARI	28,840	1993	KHERSONSKIY	UKRAINE	B&W	10,827	290	3.1	UNDISCLOSED	AS IS PERU

*En bloc

Week's 50 sale



Weekly Results As Published By The Baltic Exchange on: 27th December, 2012

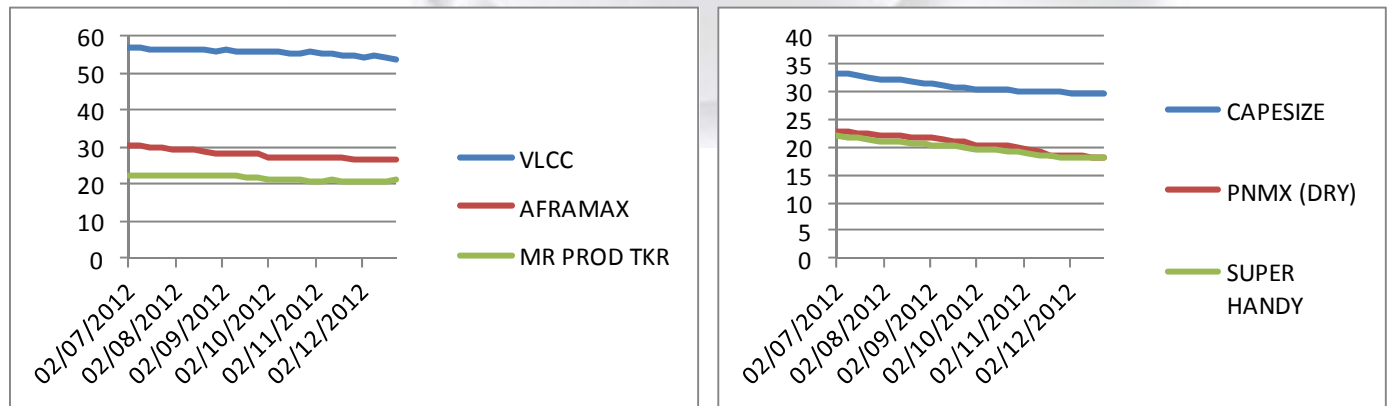
Baltic Sale & Purchase Assessment (BSPA)

Type	Size	Age	Price (US\$ in mil)	Change (US\$ in mil)
VLCC	305,000 dwt	max. 5 years old	53.875	- 0.469
AFRAMAX	105,000 dwt	max. 5 years old	26.663	+ 0.068
MR PRODUCT	45,000 dwt	max. 5 years old	21.054	+ 0.114
CAPE SIZE B/C	172,000 dwt	max. 5 years old	29.705	- 0.055
PANAMAX B/C	74,000 dwt	max. 5 years old	18.280	- 0.029
SUPER HANDY B/C	56,000 dwt	max. 5 years old	18.080	+ 0.086

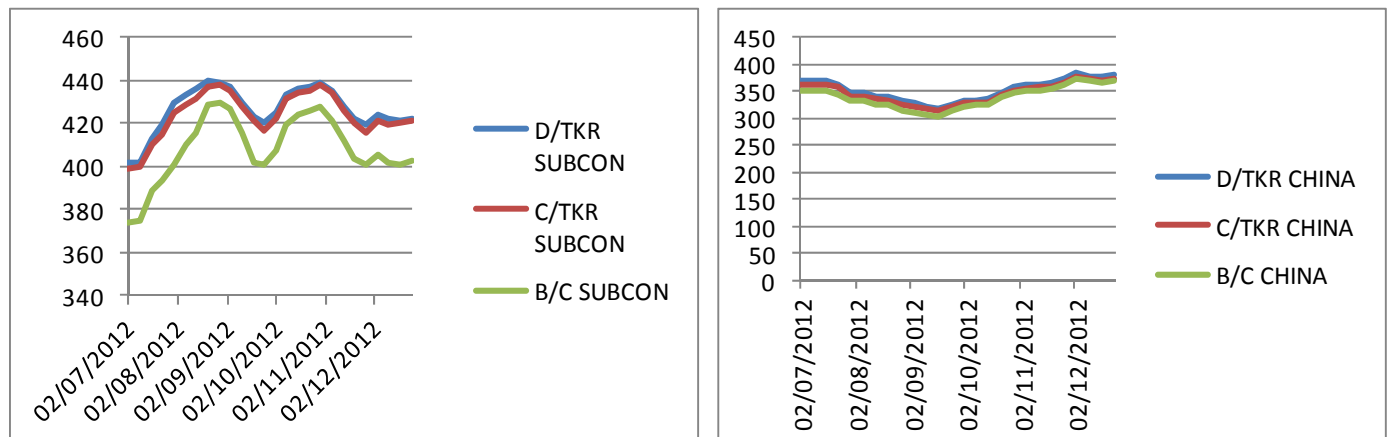
Baltic Demolition Assessment (BDA)

Type	Region	Light Ship	Price (US\$ / LDT)	Change (US\$ / LDT)
DIRTY TANKER	CHINA	15,000 - 25,000	381.000	+ 2.000
DIRTY TANKER	SUBCONTINENT	15,000 - 25,000	422.000	+ 1.000
CLEAN TANKER	CHINA	6,000 - 10,000	373.400	+ 3.000
CLEAN TANKER	SUBCONTINENT	6,000 - 10,000	421.000	+ 1.000
BULK CARRIER	CHINA	7,000 - 12,000	369.600	+ 3.000
BULK CARRIER	SUBCONTINENT	7,000 - 12,000	403.000	+ 2.000

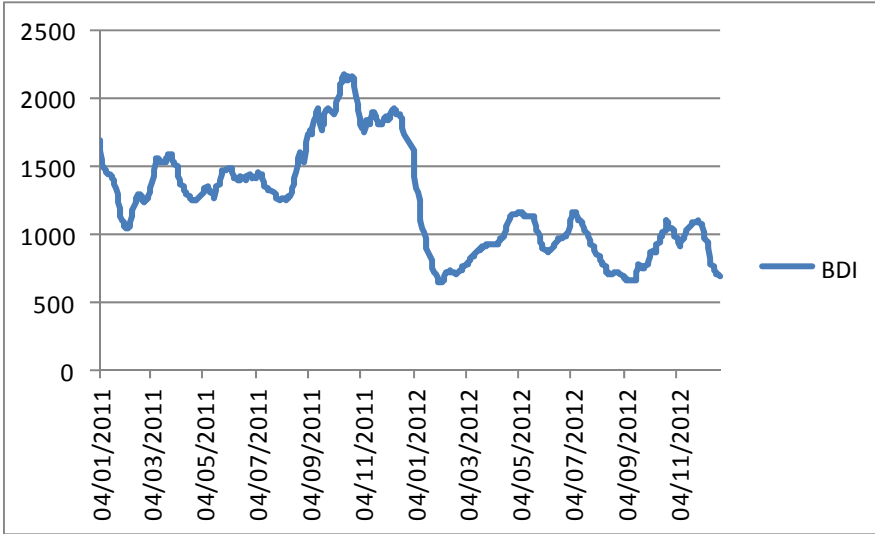
BSPA Last Six Months



BDA Last Six Months

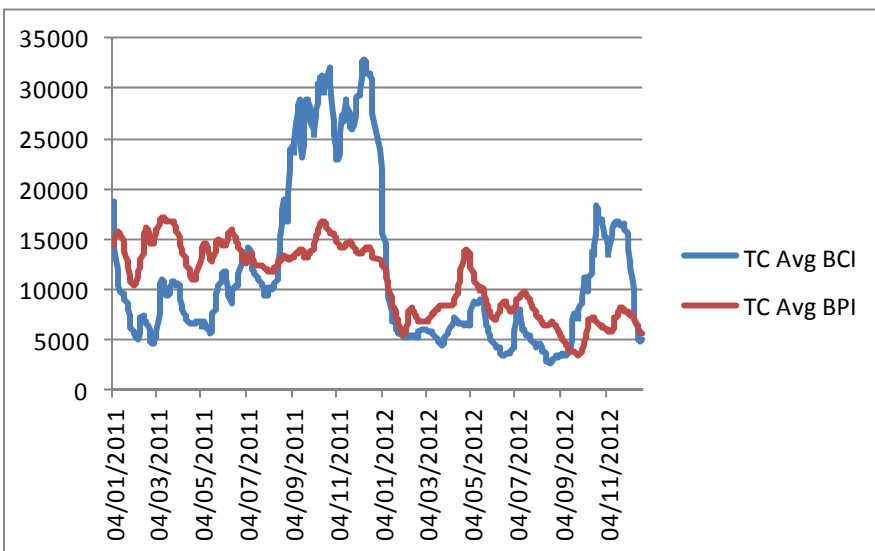


BDI - Dry Market Index (01/01/2011 - 27/12/2012)



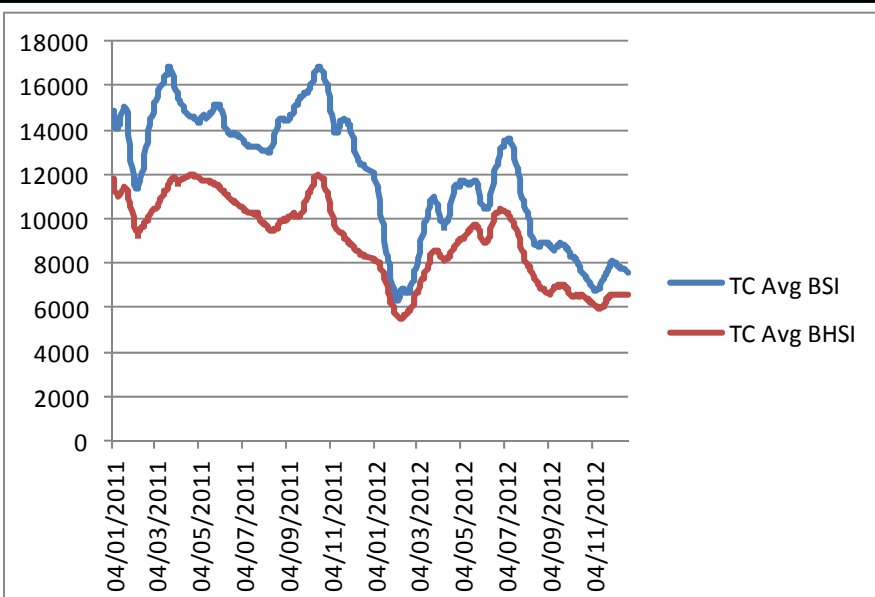
Date	BDI
03/01/2012	1624
17/12/2012	766
18/12/2012	743
19/12/2012	720
20/12/2012	708
21/12/2012	700
24/12/2012	699
WoW Change	-67
YtD Change	-925

Average Charter Earnings - Panamax / Cape (01/01/2011 - 27/12/2012)



Date	TC Avg BCI	TC Avg BPI
03/01/2012	23991	12927
17/12/2012	6239	6469
18/12/2012	5617	6292
19/12/2012	5032	6069
20/12/2012	4861	5820
21/12/2012	4814	5622
24/12/2012	4895	5536
WoW Change	-1344	-933
YtD Change	-19096	-7391

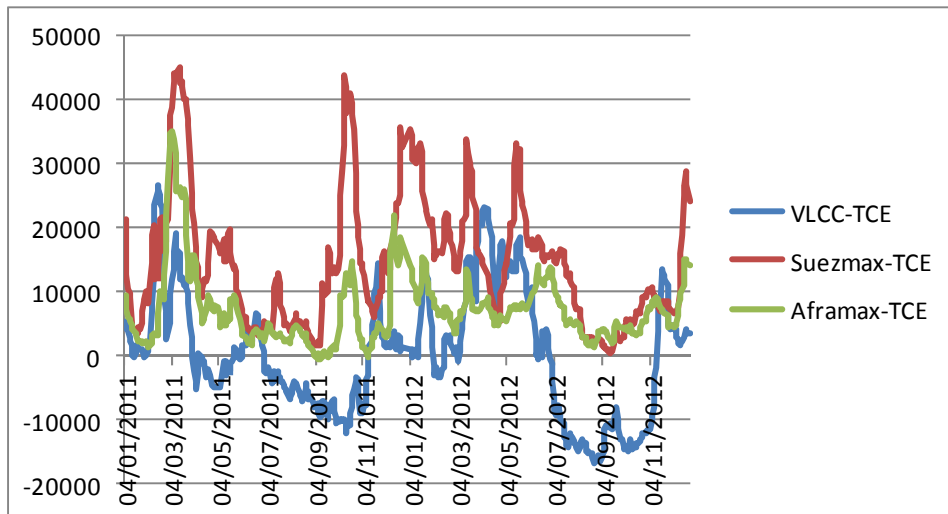
Average Charter Earnings - Supramax / Handymax (01/01/2011 - 27/12/2012)



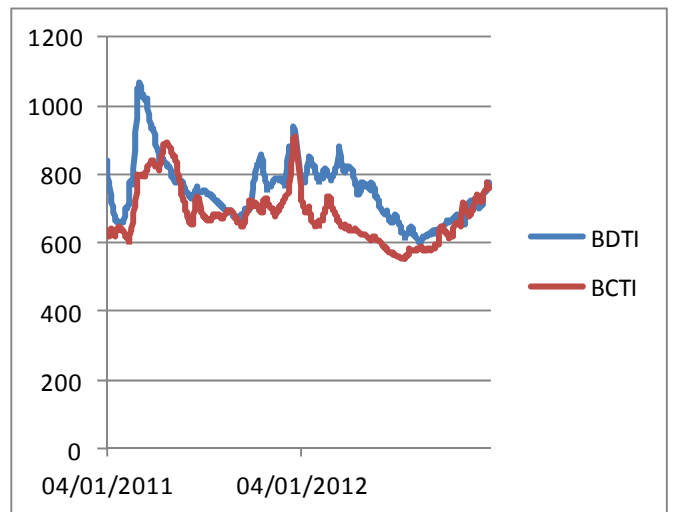
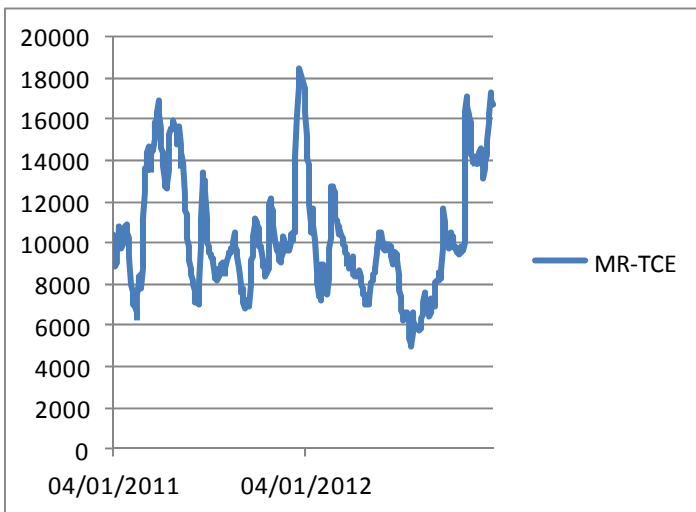
Date	TC Avg BSI	TC Avg BHSI
03/01/2012	12111	8226
17/12/2012	7761	6546
18/12/2012	7717	6555
19/12/2012	7714	6556
20/12/2012	7690	6572
21/12/2012	7654	6587
24/12/2012	7607	6602
WoW Change	-154	56
YtD Change	-4504	-1624



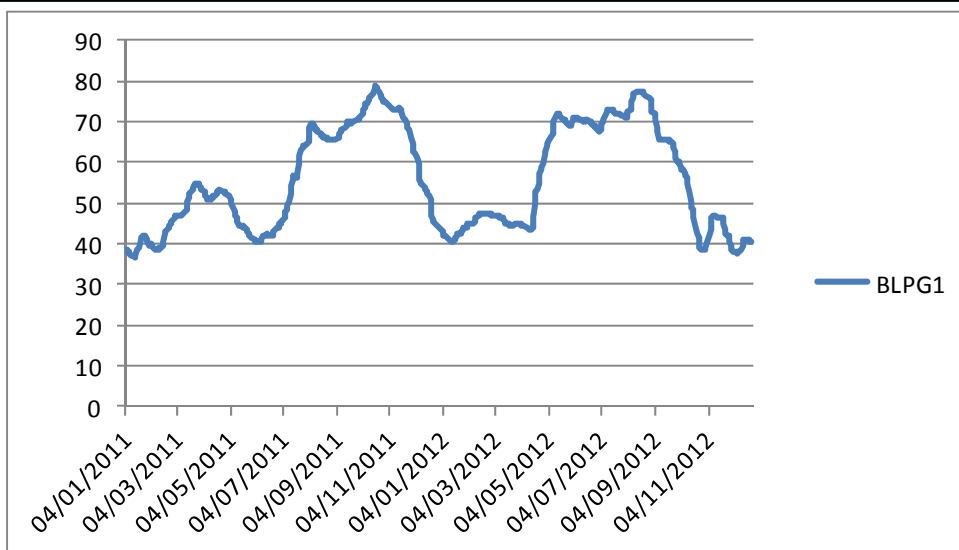
Average Charter Earnings - VLCCs / SUEZMAX / AFRAMAX (01/01/2011 - 27/12/2012)



Average Charter Earnings - MRs / BDTI & BCTI (01/01/2011 - 27/12/2012)



Average Charter Earnings - LPGs (01/01/2011 - 27/12/2012)



All information supplied in this report is provided in good faith but without guarantee, Optima shipbrokers does not accept responsibility for any errors and omissions arising from this report and cannot be held responsible for any action taken, or losses incurred, as a result of the details in this report.

